



Ficha técnica de produto

Technique product file / Ficha técnica de produto

Data: 23.10.2015

Versão: 1.1

ML.21.813

Mola de porta oculta /
Concealed overhead door closer
Cierra puertas oculto

ET: 1592/2015

Documento confidencial / Confidential document / Documento confidencial © JNF 2015 www.jnf.pt

Descrição / Description / Descripción	Mola de porta aérea hidráulica de embutir - Mecanismo CAM / Concealed hydraulic overhead door closer - CAM action mechanism Cierra puertas hidraulico de embutir - Mecanismo CAM	
Versão / Version / Versión.	1.1	
Data / Date / Data	23.10.2015	
largura máxima de porta Max. door wide/ Ancho max. de la puerta	1100 mm.	
Carga max. / Max. Weight / Carga Max.	130 kg.	
Espessura mínima de porta Min. door thickness/ Espesor mínimo de la puerta	40 mm.	
Acabamento / Finish / Acabado	Pintado RAL 9006 / Painted RAL 9006 / Pintado RAL 9006	
Material / Material / Material	Aluminio / Aluminium / Aluminio	
Angulo de abertura / Opening angle / Angulo de apertura	120°	
Paragem / Stop / Freno	Opcional / Optional / Optional	
Garantia / Warrantie / Garantia	5 anos / 5 years/ 5 años	

Info. Embalagem / Package / Embalage

Código de Barras /

Bar code /

Codigo de barras



5160268610401931



5160268615401981

Unidade / Unit / Unidad

1 Kit

10 Kits

Peso / Weight / Peso

2 kg

21 kg

Medidas / Dimensions / Dimensiones

470 x 105 x 45 mm

-

Embalagem / Package / Embalage

Caixa / box / Caja

Caixa / box / Caja



EN fire tested
by Warrington APT laboratories UK



Para portas de batiente.
Braço antivandalismo
Fuerza ajustable: 2-4
Regulación de fuerza por muelle
Velocidad de cierre ajustable por válvula
Velocidad de golpe final ajustable por válvula
Sistema de retención en la apertura: extraíble
Cierra puertas reversible



Ficha técnica de produto

Technique product file / Ficha técnica de produto

Data: 23.10.2015

Versão: 1.1

ML.21.813

Mola de porta oculta /
Concealed overhead door closer
Cierra puertas oculto

ET: 1592/2015

Documento confidencial / Confidential document / Documento confidencial © JNF 2015 www.jnf.pt

Descrição / Description / Descripción

Mola de porta aérea hidráulica de embutir - Mecanismo CAM /

Concealed hydraulic overhead door closer - CAM action mechanism

Cierra puertas hidraulico de embutir - Mecanismo CAM

Versão / Version / Versión.

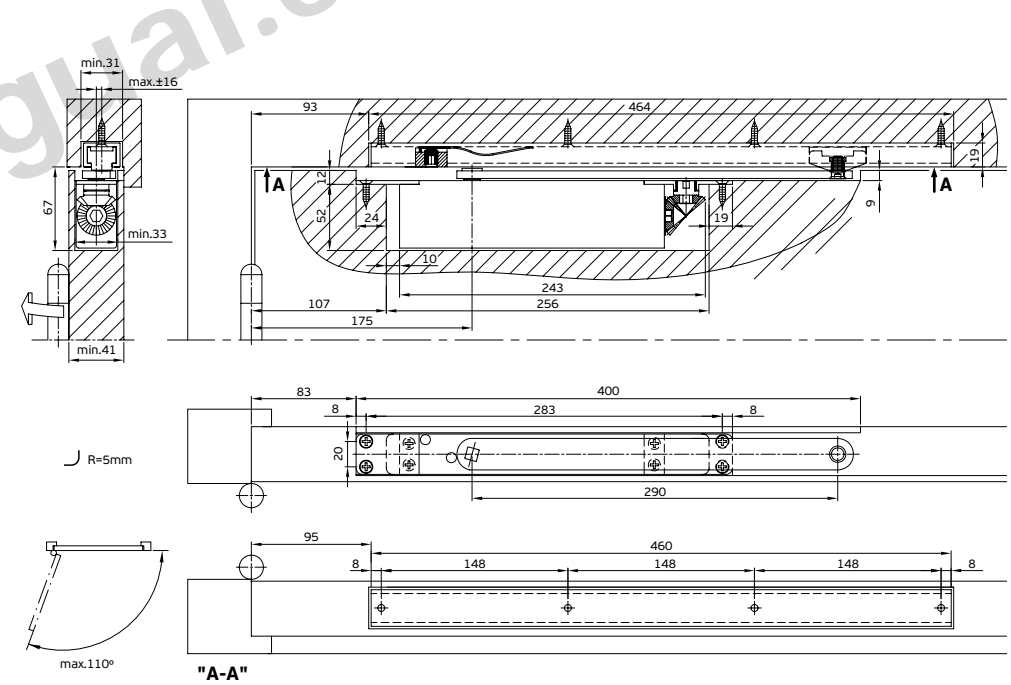
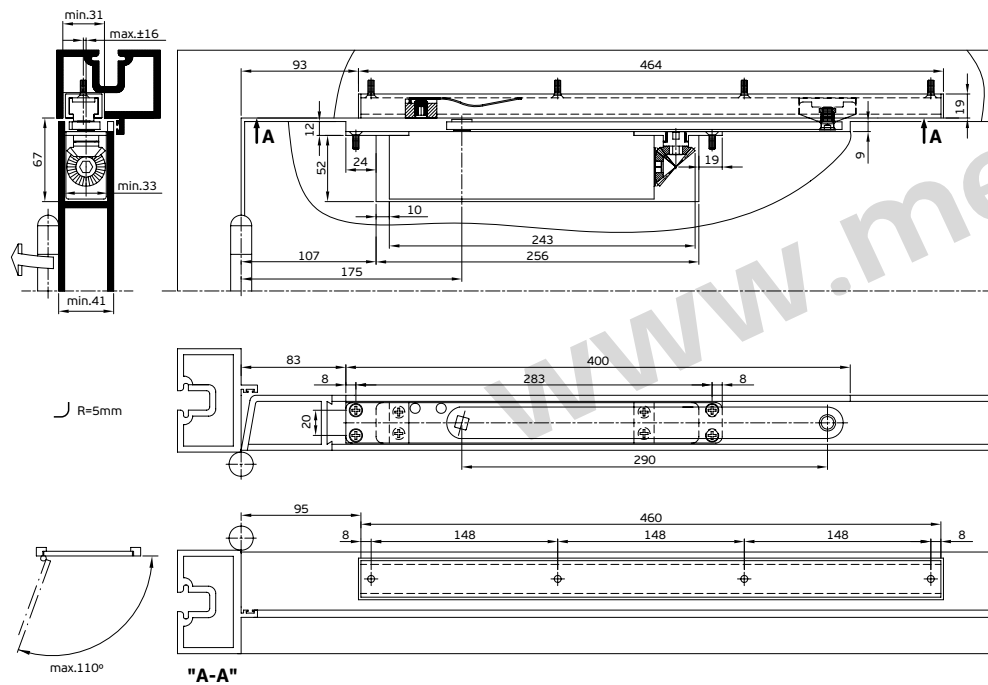
1.1

Data / Date / Data

23.10.2015

EN fire tested

by Warrington APT laboratories UK





Ficha técnica de produto

Technique product file / Ficha técnica de produto

Data: 23.10.2015

Versão: 1.1

ML.21.813

Mola de porta oculta /
Concealed overhead door closer
Cierra puertas oculto

ET: 1592/2015

Documento confidencial / Confidential document / Documento confidencial © JNF 2015 www.jnf.pt

Descrição / Description / Descripción

Mola de porta aérea hidráulica de embutir - Mecanismo CAM /

Concealed hydraulic overhead door closer - CAM action mechanism

Cierra puertas hidraulico de embutir - Mecanismo CAM

Versão / Version / Versión.

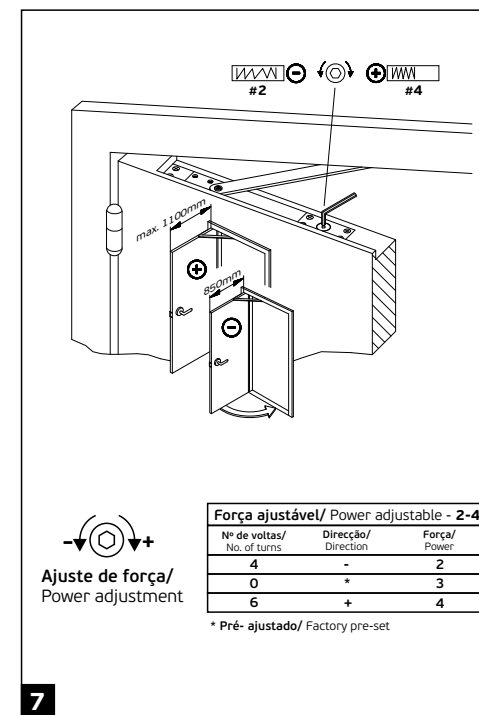
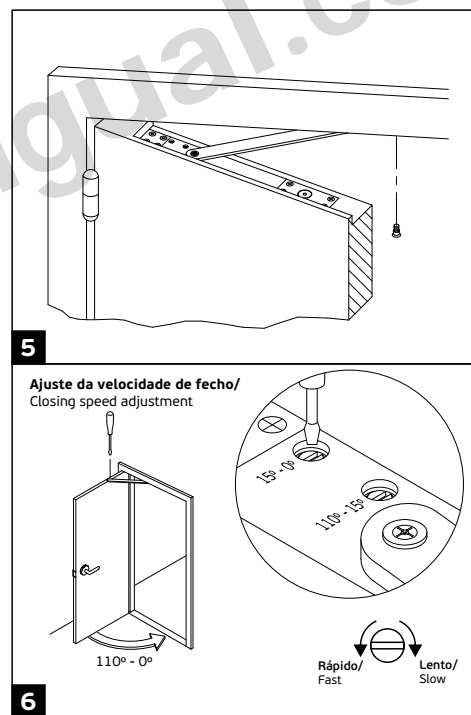
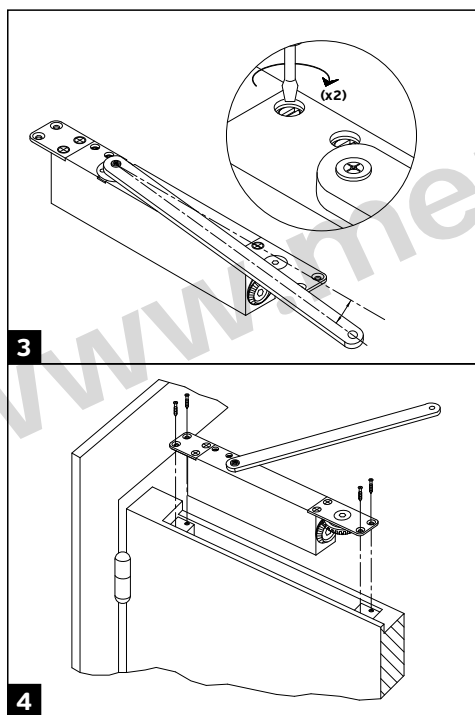
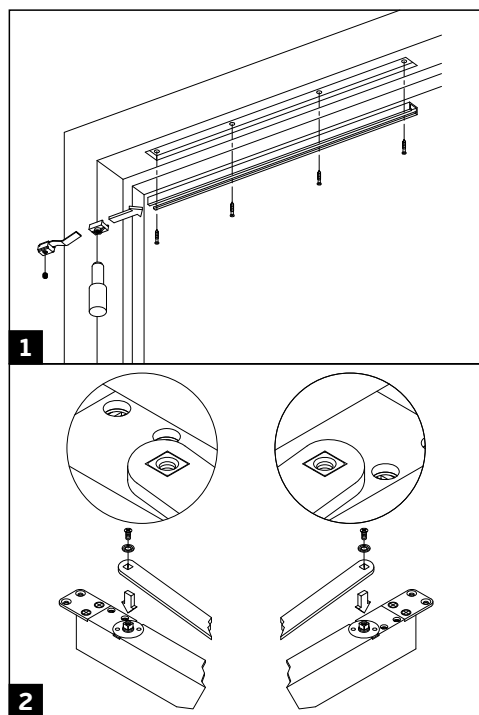
1.1

Data / Date / Data

23.10.2015

EN fire tested

by Warrington APT laboratories UK

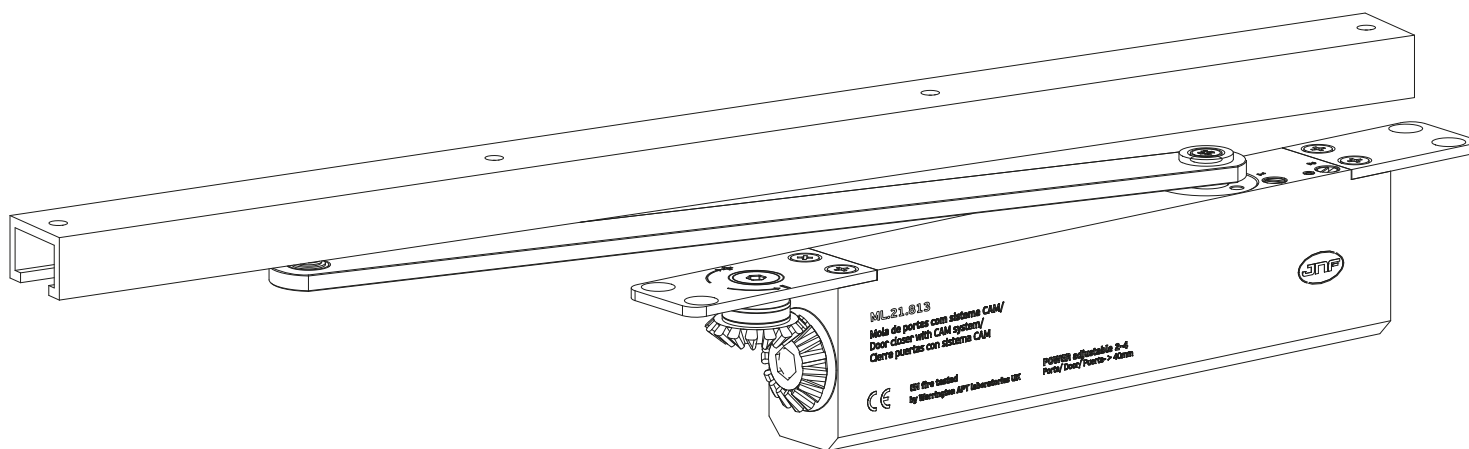


Força ajustável/ Power adjustable - 2-4		
Nº de voltas/ No. of turns	Direção/ Direction	Força/ Power
4	-	2
0	*	3
6	+	4

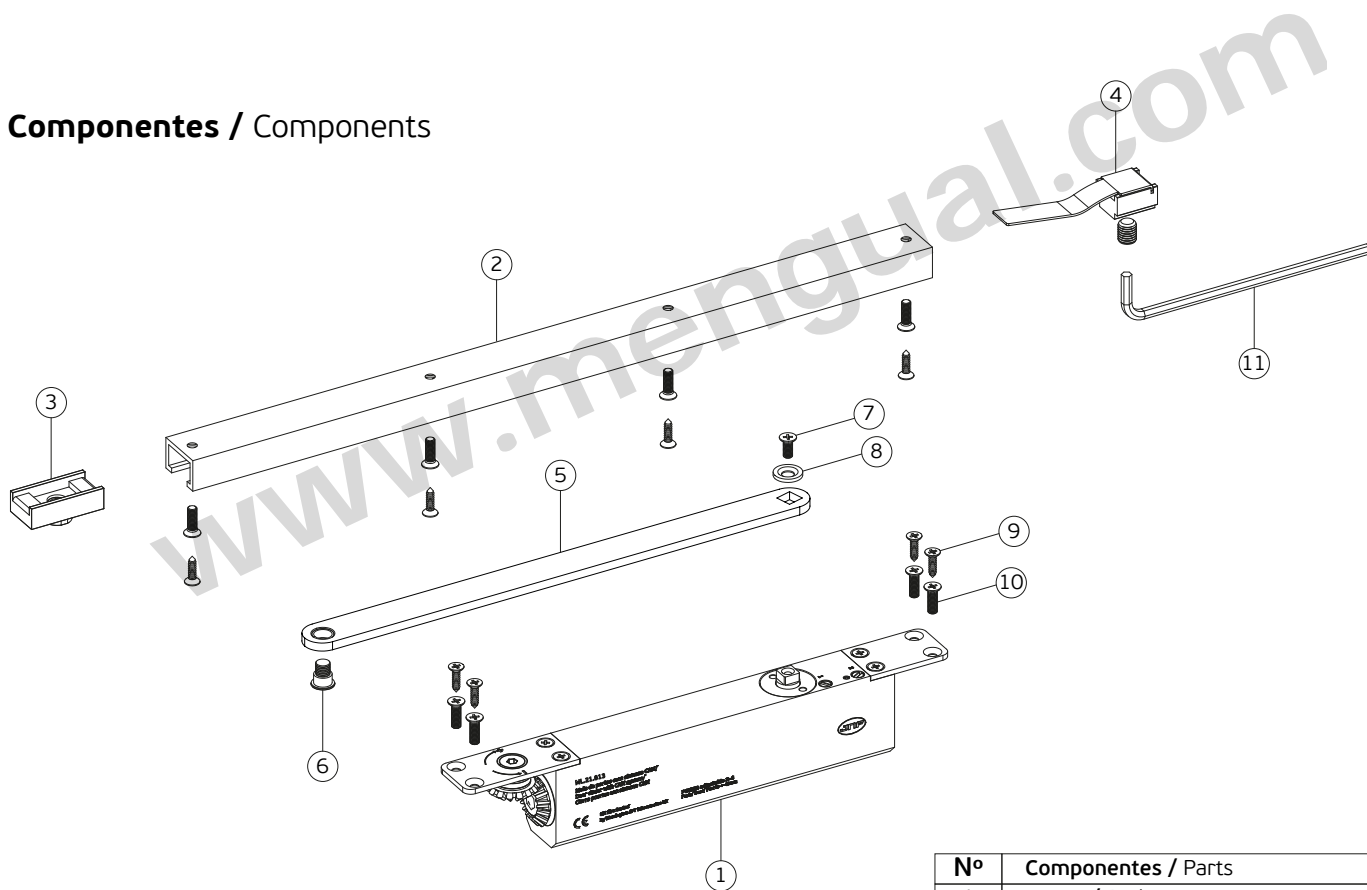
* Pré-ajustado/ Factory pre-set

ML.21.813

MOLA DE PORTA AÉREA DE EMBUTIR PARA PORTAS DE BATENTE/
CONCEALED OVERHEAD DOOR CLOSER FOR SINGLE ACTION DOORS/
CIERRA PUERTAS DE EMBUTIR PARA PUERTAS DE BATIENTE.



Componentes / Components

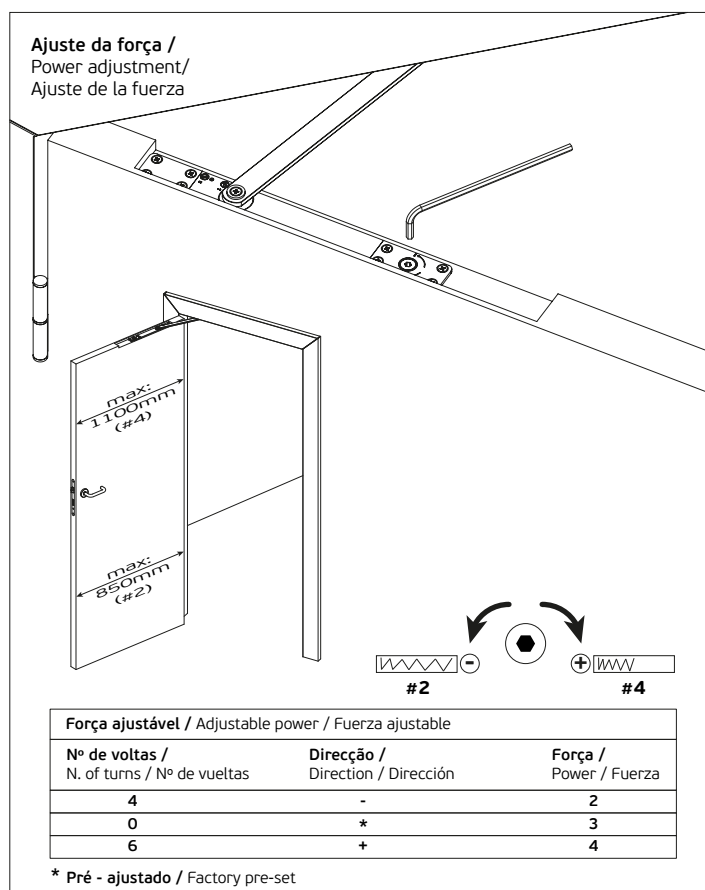
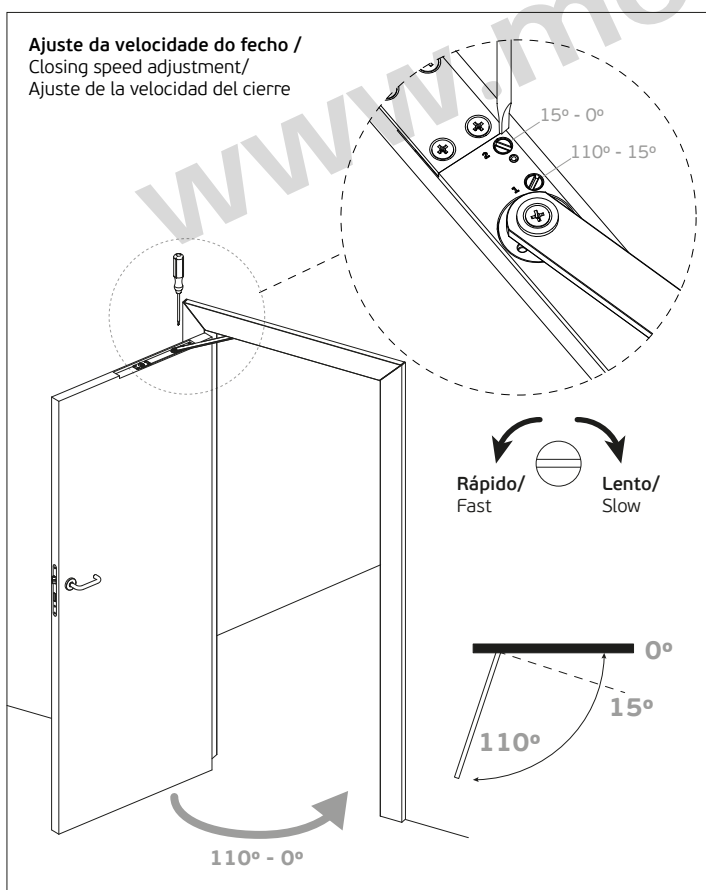
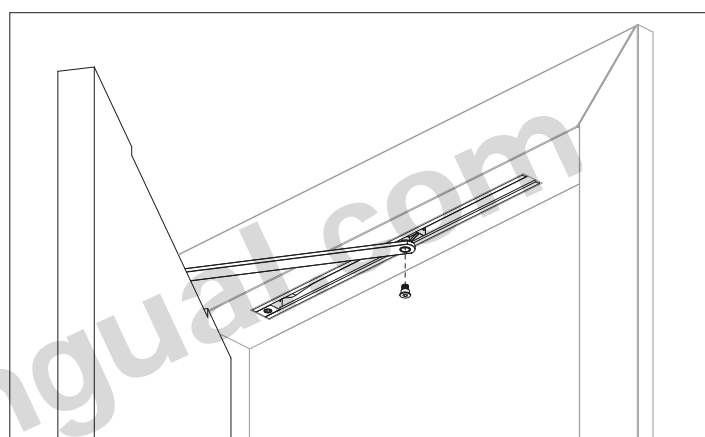
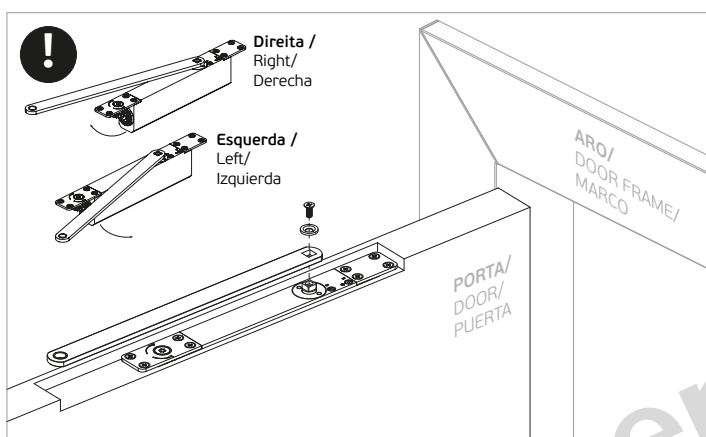
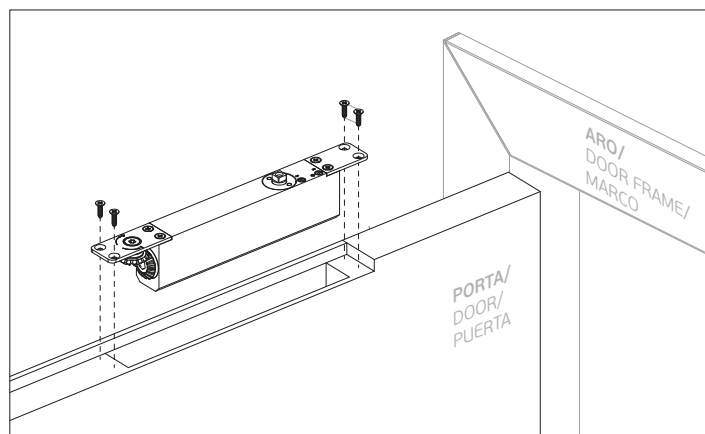
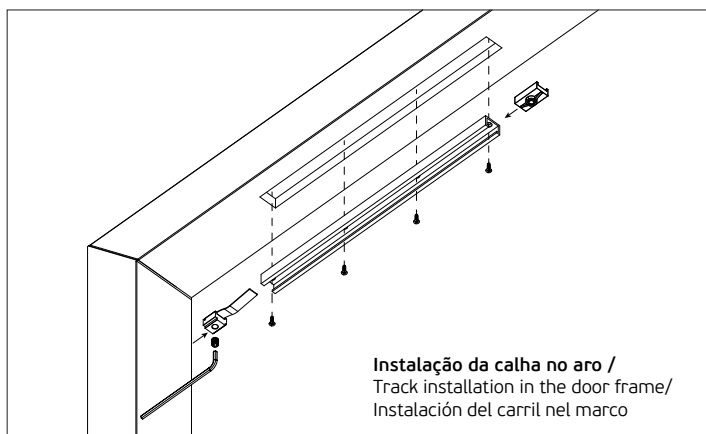


Nº	Componentes / Parts	Qt.
1	Corpo / Body	1x
2	Calha / Track	1x
3	Batente / Stopper	1x
4	Retentor / Retainer	1x
5	Braço / Arm	1x
6	Parafuso de fixação / Fixing screw - M8	1x
7	DIN 965 - M5x12mm	1X
8	Anilha / Washer	1X
9	DIN 7981 - 4,9x16mm	8x
10	DIN 965 - M5x15mm	8x
11	Chave Allen / Allen key - 5mm	1x

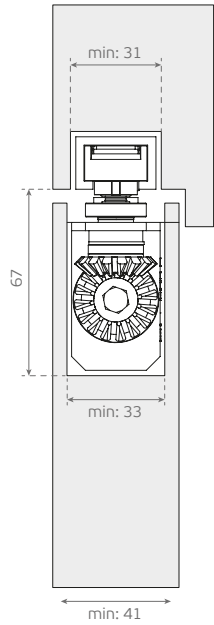


EN fire tested
 by Warrington APT laboratories UK

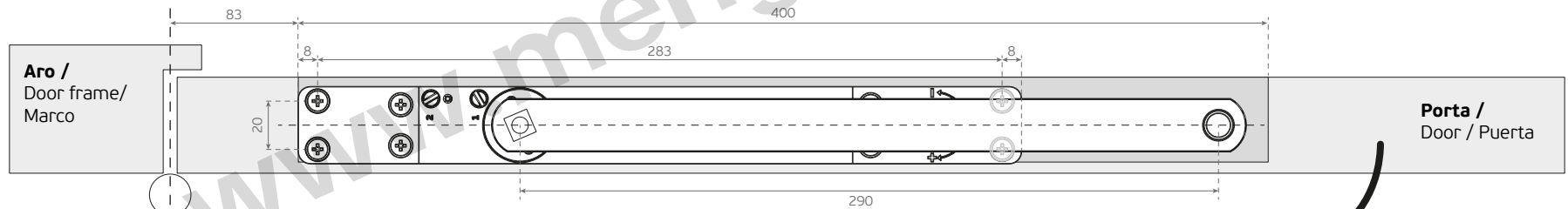
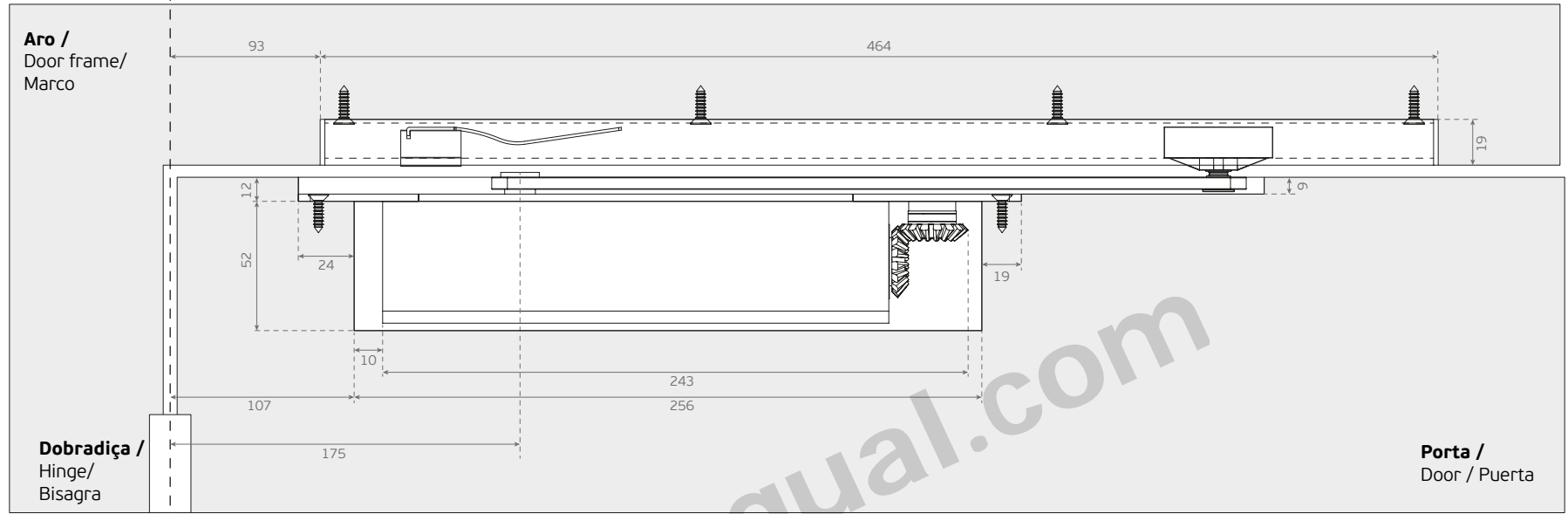
Instalação / Installation / Instalación



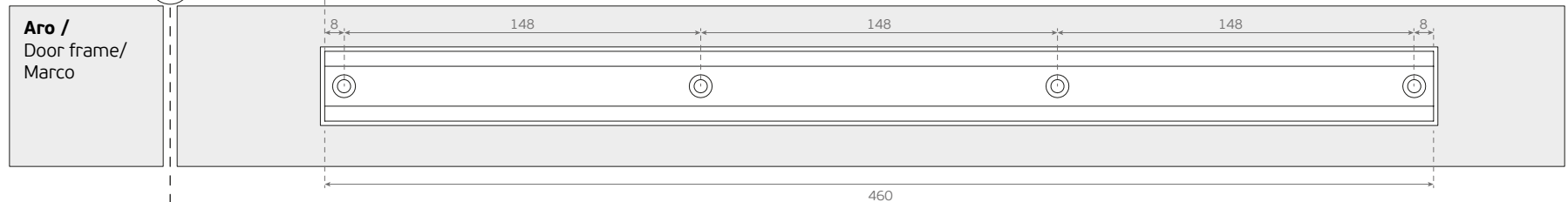
Montagem da mola na porta /
Assembling the body on the door /
Montaje del cuerpo en la puerta



→ **Eixo de rotação /**
 Rotation point / Eje de rotación



MAX: 110°



→ **Eixo de rotação /**
 Rotation point / Eje de rotación

Montagem da mola no aro /
 Assembling the body on the door frame /
 Montaje del cuerpo en el marco

